

# Magnificent Moon

## Explore Environments



**RESPOND** to knowing you are part of the Artemis generation who will see NASA astronauts return to the moon for the first time since the Apollo missions more than 50 years ago. Space exploration

involves teamwork, blending the talents of many people to launch and navigate the spacecraft that will travel around 28,000 miles per hour!

Although astronauts are the public face of space missions, did you know it takes thousands of people working behind the scenes to make a space mission successful? Roles include preparing nutritious meals, developing systems that provide air and water, protecting astronauts from radiation, and ensuring communications with Earth.

SKETCH SOME OF THE MANY JOBS IT TAKES TO LAUNCH A SPACE MISSION.

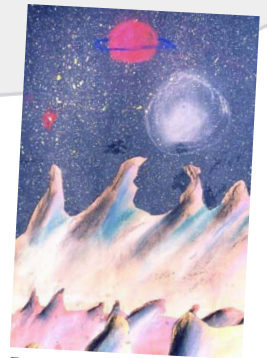


Photo credit: NASA



**CONNECT** with a small group and imagine you are part of a space exploration team. If you worked in a Moon exploration research station, what would your base camp look like? How would this be similar to and different from the International Space Station?

JOT SOME MOON RESEARCH NOTES HERE:



Brandon A.

---

---

---

---

# Magnificent Moon

## Explore Environments



**CREATE** a sketch of the *Magnificent Moon* as you imagine it would look from your spacecraft window. Or sketch a view of Earth you imagine you'd see as you work in a futurist Moon research station and look at our amazing planet.



Zofia S.



Andrew S.

MAGNIFICENT MOON



**OUTLINE THE KEY POINTS OF YOUR PRESENTATION.**

**PRESENT** your art as if you were a NASA communications leader. Report on a future Artemis mission as if you were presenting a news story. What facts will you share? How will your news report bring the Moon closer to your viewers? How will you tell the story of the astronauts and the many other NASA employees who made this mission possible?

---

---

---

---

---

---

---